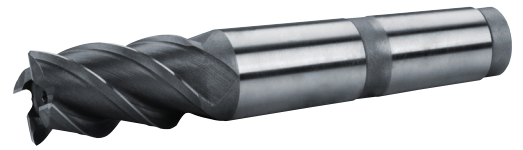
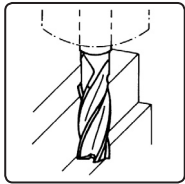


$\lambda=45^\circ$ CODE $\lambda=45^\circ$ CODE
 $\gamma=22^\circ$ 410245 $\gamma=20^\circ$ 410940



Použití - Usage - Applikation - Употребление



410245	1	2	4		7		11	12
410940	1	2			7		11	12



HSS
 Co5



HSS

D k 10**	l	L	MK	Z	CODE 410245	CODE 410940*	IDENT.
10	22	92	1	3	•		.100
12	26	111	2	3	•		.120
16	32	117	2	3	•		.160
20	38	123	2	3	•		.200
22	38	123	2	3	•		.220
25	45	147	3	4	•		.250
25	50	154	3	4		•	.250
28	45	147	3	4	•		.280
28	50	154	3	4		•	.280
30	45	147	3	4	•		.300
30	50	154	3	4		•	.300
32	53	178	4	4	•	•	.320
36	53	178	4	4	•	•	.360
40	63	188	4	4	•	•	.400
45	63	188	4	4	•	•	.450
50	70	228	5	5		•	.500
50	75	233	5	5	•		.500
63	80	241	5	6		•	.630
63	90	248	5	6	•		.630



TiN

TiCN

TiAlN

* / ≠ DIN 845
 ** / 410940 - js 14