

DIN 138

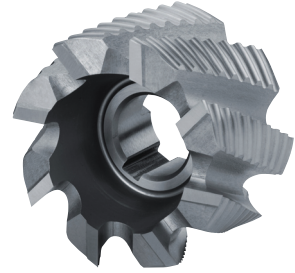


$\lambda=30^\circ$

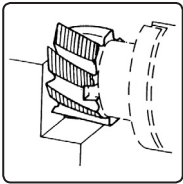
$\gamma=12^\circ$

typ

NR



Použití - Usage - Applikation - Употребление



HSS  
 Co5

D js 16	L	d H 7	Z	CODE 624275	IDENT.
40	32	16	6	•	.040
50	36	22	6	•	.050
63	40	27	8	•	.063
80	45	27	8	•	.080
100	50	32	10	•	.100



TiN

TiCN

TiAlN